

Fepic®



**SANA SAFINAZ**  
*LUXURY LIGHT*



D.NO.43015



D.NO.43016



D.NO.43017



D.NO.43018



D.NO.43019



D.NO.43020



D.NO.43021

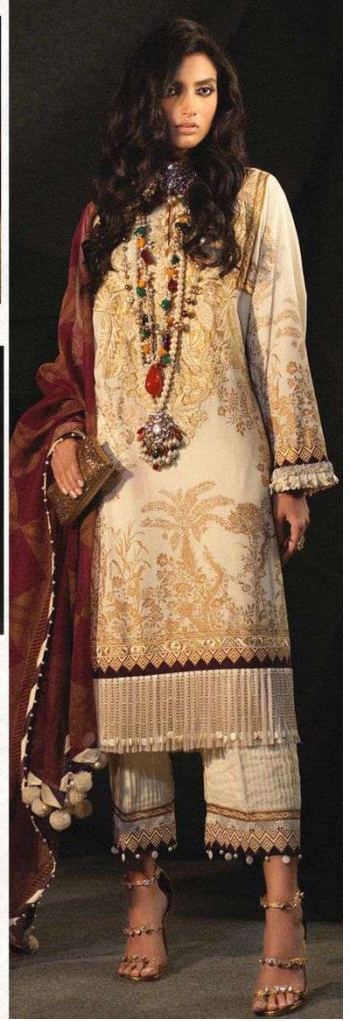


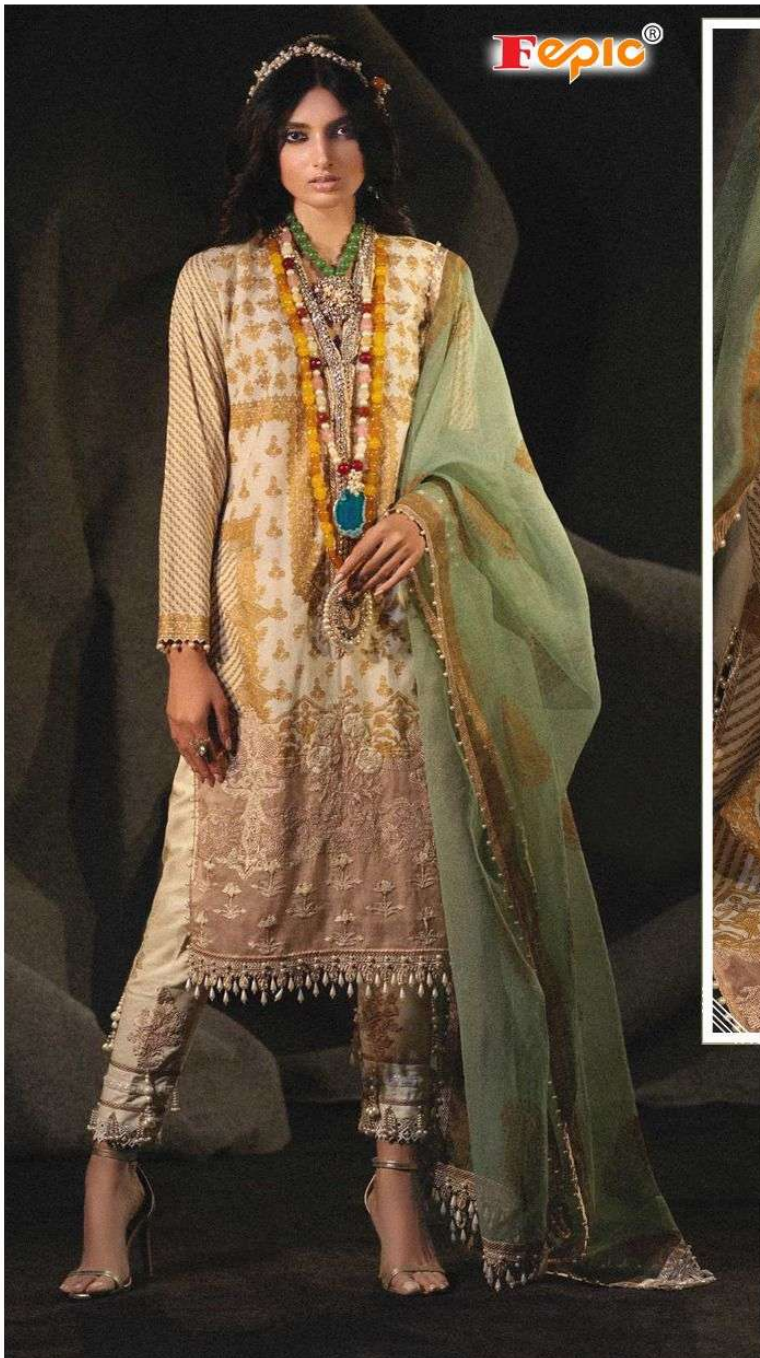
D.NO.43022

**Fepic®**  
**SANA SAFINAZ**  
*LUXURY LIGHT*

Instagram: [\\_Fepic](#)

Facebook: [Fb.com/Fepic11](#)





**Fepic®**



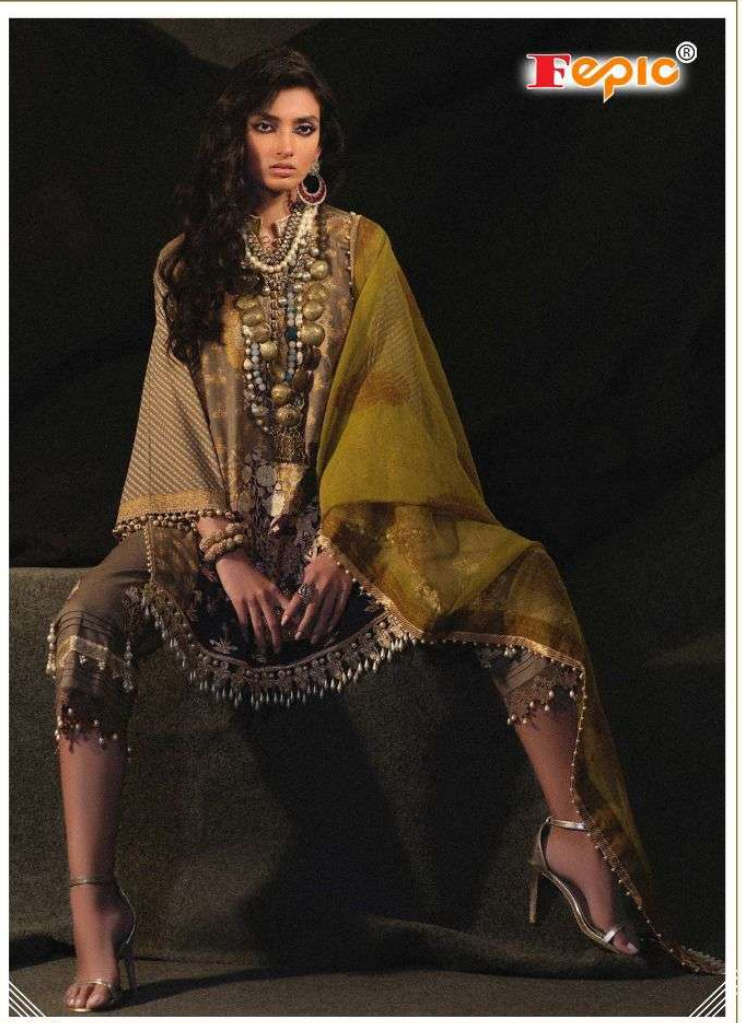
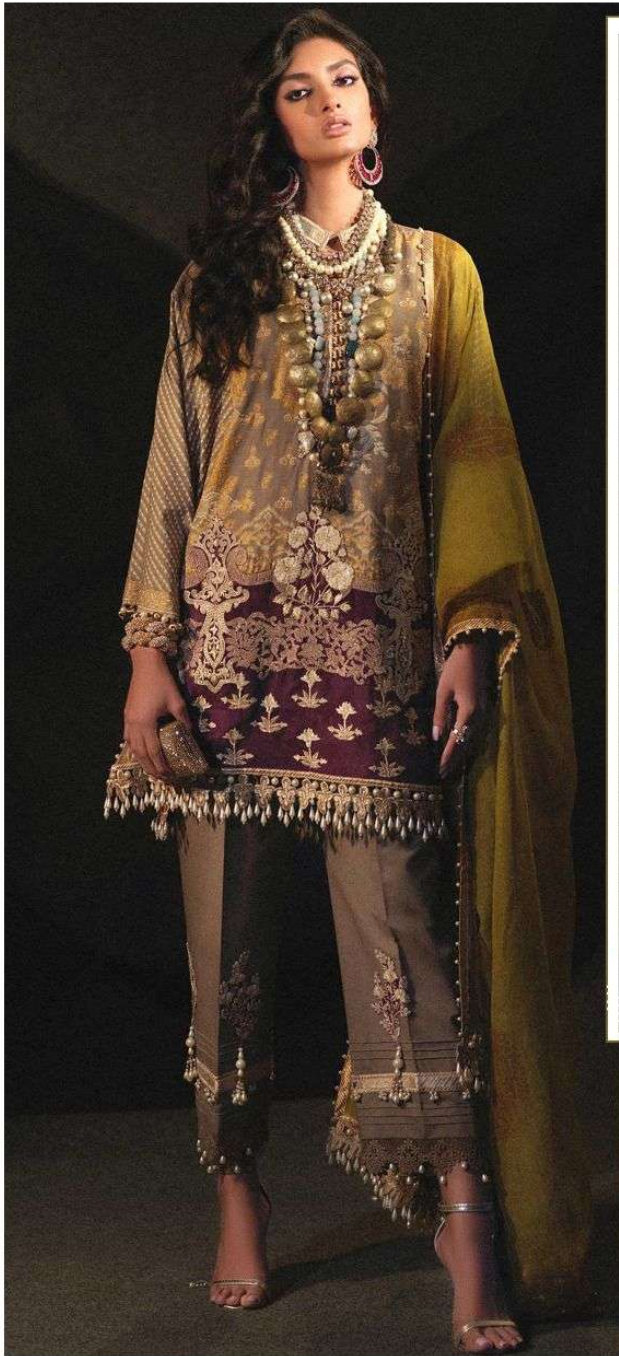
#### WASHING INTRUCTIONS

DO NOT USE ANY TYPE OF BLEACH OR STAIN REMOVING CHEMICALS  
BEFORE CUTTING / STITCHING, FABRIC SHOULD BE SOAKED BE SOAKED IN WATER  
( ALL COMPONENTS SEPARATELY ) FOR 15 MINUTES  
DO NOT KEEP WET FABRIC IN TWISTED FROM IN ORDER TO AVOID COPY MARKS |  
WASH COLOURED AND WHITE FABRICS SEPARATELY  
IRON CLOTHES AT MODERATE TEMPERATURE | DO NOT DRY FABRIC IN DIRECT SUNLIGHT  
( EXTRA LACES, HANGINGS AND ACCESSORIES ARE NOT INDUDED )

**D.NO.43015**

**SANA SAFINAZ**  
*LUXURY LIGHT*





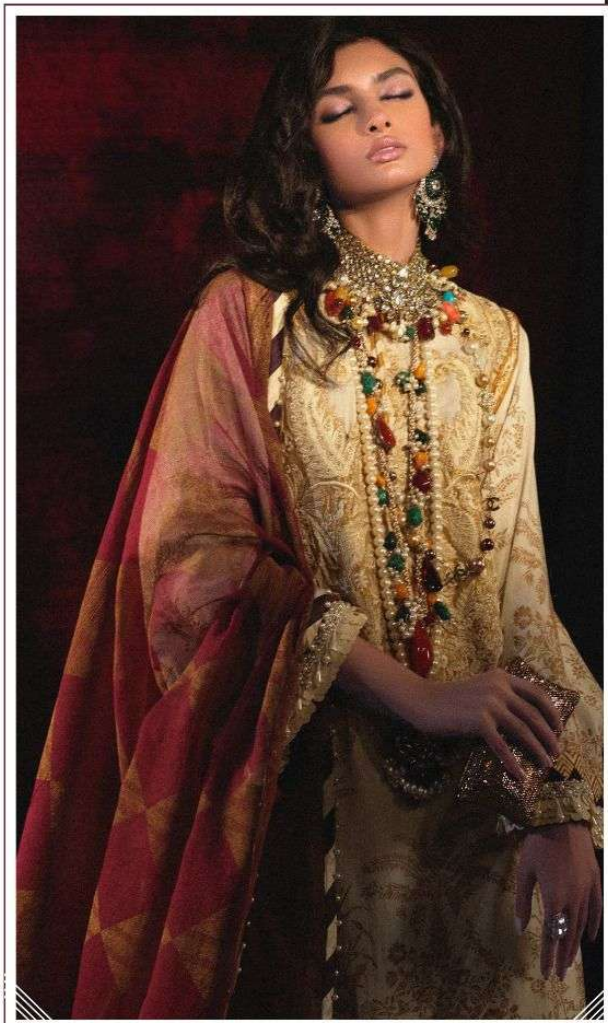
#### WASHING INTRUCTIONS

DO NOT USE ANY TYPE OF BLEACH OR STAIN REMOVING CHEMICALS  
BEFORE CUTTING / STITCHING, FABRIC SHOULD BE SOAKED BE SOAKED IN WATER  
( ALL COMPONENTS SEPARATELY ) FOR 15 MINUTES  
DO NOT KEEP WET FABRIC IN TWISTED FROM IN ORDER TO AVOID COPY MARKS |  
WASH COLOURED AND WHITE FABRICS SEPARATELY  
IRON CLOTHES AT MODERATE TEMPERATURE | DO NOT DRY FABRIC IN DIRECT SUNLIGHT  
( EXTRA LACES, HANGINGS AND ACCESSORIES ARE NOT INDUDED )

D.NO.43016

**SANA SAFINAZ**  
*LUXURY LIGHT*



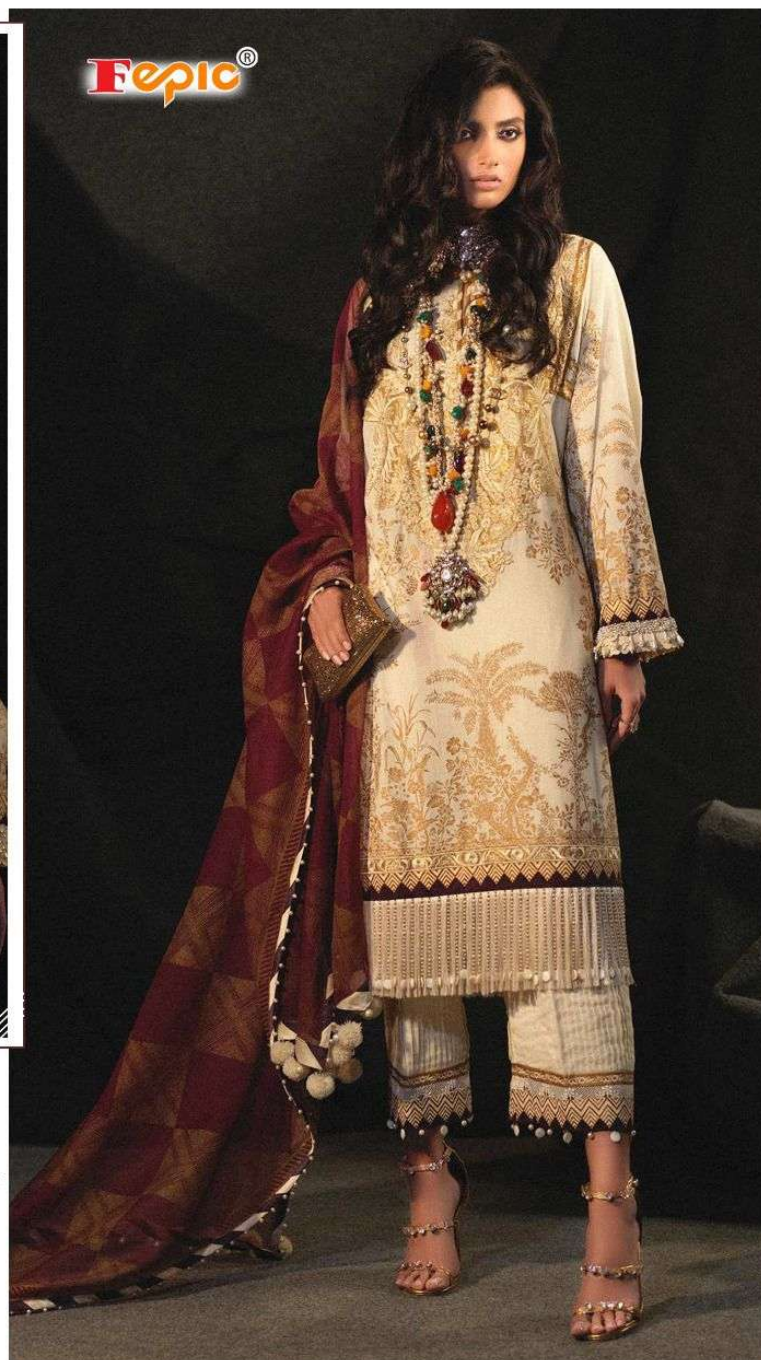
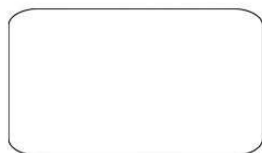


#### WASHING INTRUCTIONS

DO NOT USE ANY TYPE OF BLEACH OR STAIN REMOVING CHEMICALS  
 BEFORE CUTTING / STITCHING, FABRIC SHOULD BE SOAKED BE SOAKED IN WATER  
 ( ALL COMPONENTS SEPARATELY ) FOR 15 MINUTES  
 DO NOT KEEP WET FABRIC IN TWISTED FROM IN ORDER TO AVOID COPY MARKS |  
 WASH COLOURED AND WHITE FABRICS SEPARATELY  
 IRON CLOTHES AT MODERATE TEMPERATURE | DO NOT DRY FABRIC IN DIRECT SUNLIGHT  
 ( EXTRA LACES, HANGINGS AND ACCESSORIES ARE NOT INDUDED )

D.NO.43017

**SANA SAFINAZ**  
 LUXURY LIGHT



**Fepic®**

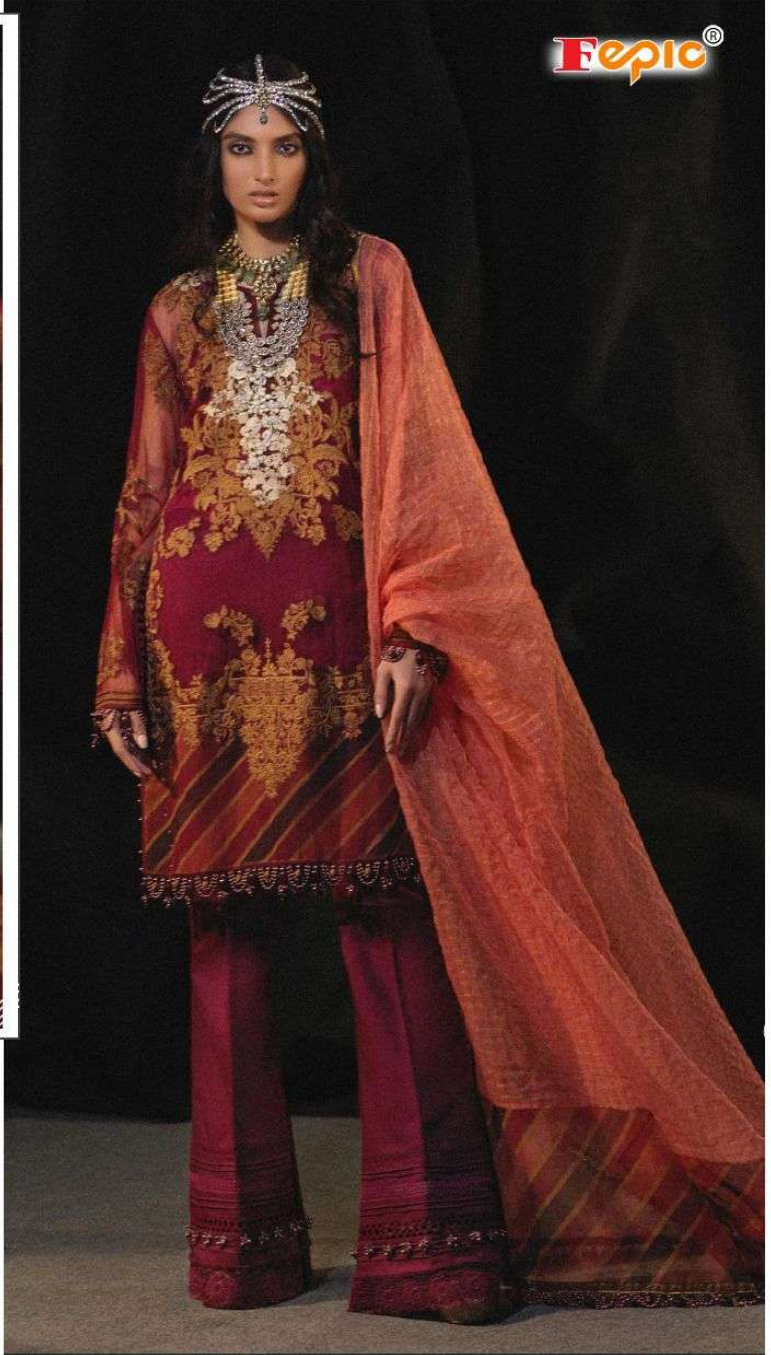


**WASHING INTRUCTIONS**

DO NOT USE ANY TYPE OF BLEACH OR STAIN REMOVING CHEMICALS  
BEFORE CUTTING / STITCHING, FABRIC SHOULD BE SOAKED BE SOAKED IN WATER  
( ALL COMPONENTS SEPARATELY ) FOR 15 MINUTES  
DO NOT KEEP WET FABRIC IN TWISTED FROM IN ORDER TO AVOID COPY MARKS |  
WASH COLOURED AND WHITE FABRICS SEPARATELY  
IRON CLOTHES AT MODERATE TEMPERATURE | DO NOT DRY FABRIC IN DIRECT SUNLIGHT  
( EXTRA LACES, HANGINGS AND ACCESSORIES ARE NOT INDUDED )

**D.NO.43022**

**SANA SAFINAZ**  
*LUXURY LIGHT*





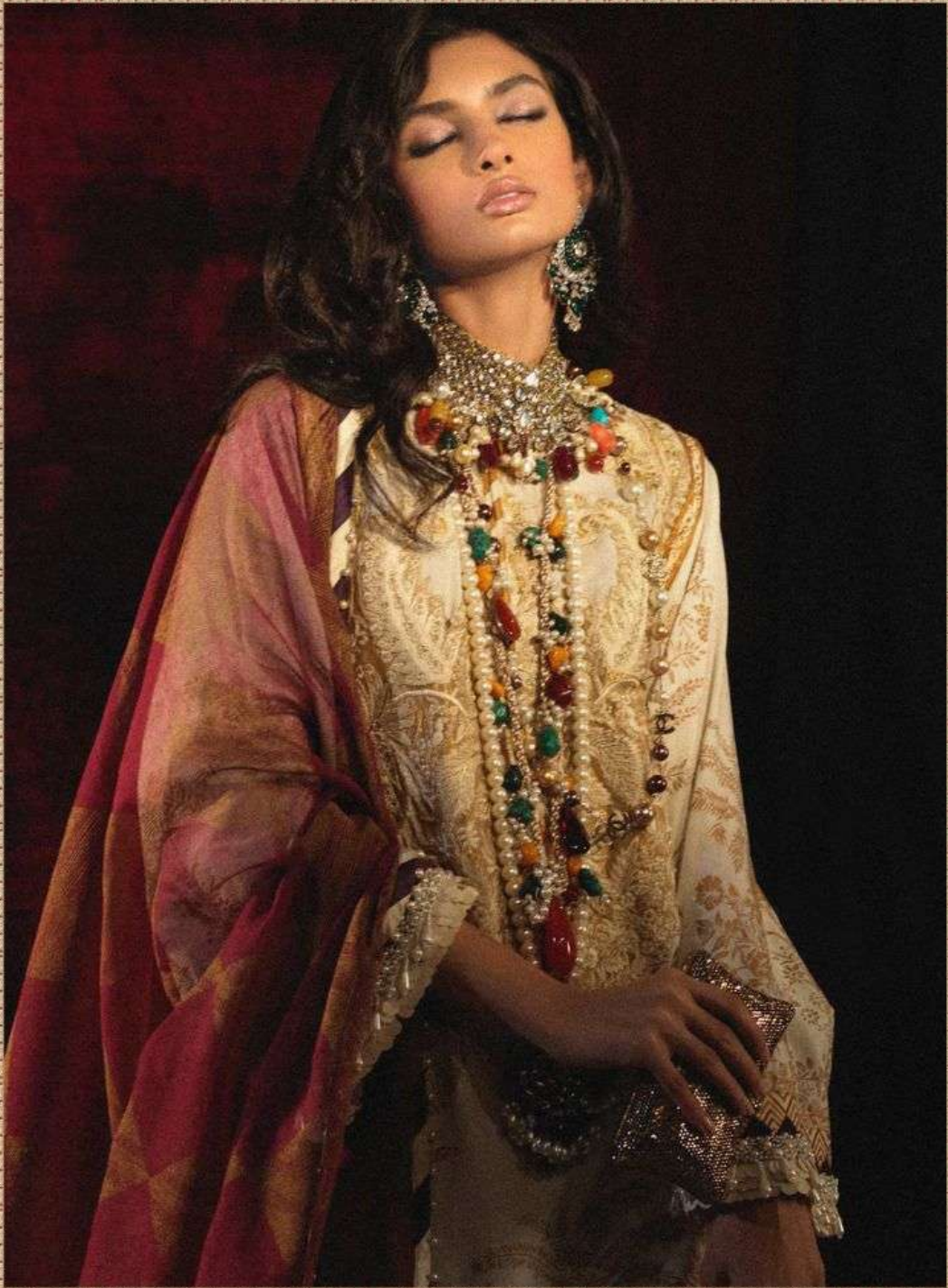
**Fepic®**

**SANA SAFINAZ**  
*LUXURY LIGHT*

Instagram: Fepic Facebook: Fb.com/Fepic11

D.NO.43022

Fepic®



**SANA SAFINAZ**  
*LUXURY LIGHT*



Fepic®

SANA SAFINAZ

LUXURY LIGHT

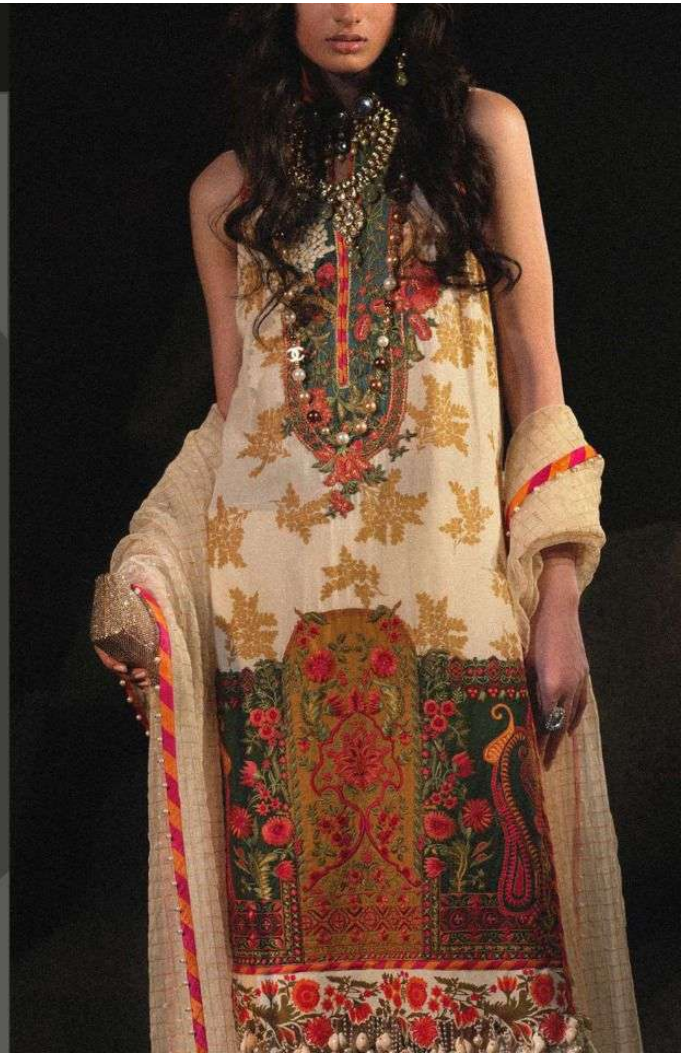


**Fepic®**

**SANA SAFINAZ**  
*LUXURY LIGHT*

 [\\_Fepic](#)  [Fb.com/Fepic11](#)

D.NO.43021





**Fepic®**

**SANA SAFINAZ**

*LUXURY LIGHT*

[\\_Fepic](#) [:Fb.com/Fepic11](#)

D.NO.43019

D.NO	TOP	BOTTOM	DUPATTA	RATE
43015	PURE COTTON PRINTED WITH EMBROIDERED PATCHES	CHIFFON PRINTED WITH LACE	SEMILAWN WITH EMBROIDERED PATCHES	941
43016	PURE COTTON PRINTED WITH EMBROIDERED PATCHES	CHIFFON PRINTED WITH LACE	SEMILAWN WITH EMBROIDERED PATCHES	941
43017	PURE COTTON PRINTED WITH EMBROIDERED PATCHES	CHIFFON PRINTED WITH LACE	SEMILAWN DYED	881
43018	PURE COTTON PRINTED WITH EMBROIDERED PATCHES	CHIFFON PRINTED WITH LACE	SEMILAWN DYED	881
43019	HEAVY NET EMBROIDERED WITH BACK AND SLEEVE WORK INNER PURE COTTON PRINTED	ORGANZA CHAQUES WITH DIGITAL BUNCHES AND LACE	SEMILAWN DYED	1051
43020	PURE COTTON PRINTED WITH EMBROIDERED PATCHES	ORGANZA CHAQUES EITH LACE	SEMILAWN DYED	921
43021	PURE COTTON PRINTED WITH EMBROIDERED PATCHES	ORGANZA CHAQUES EITH LACE	SEMILAWN DYED	921
43022	PURE COTTON PRINTED WITH EMBROIDERED PATCHES	ORGANZA CHAQUES WITH DIGITAL BUNCHES AND LACE	SEMILAWN DYED	1051
				AVG RATE-949

**Fepic®** **SANA SAFINAZ**  
*LUXURY LIGHT*

 :\_Fepic

 :Fb.com/Fepic11

**Epic®**



D.NO.43015

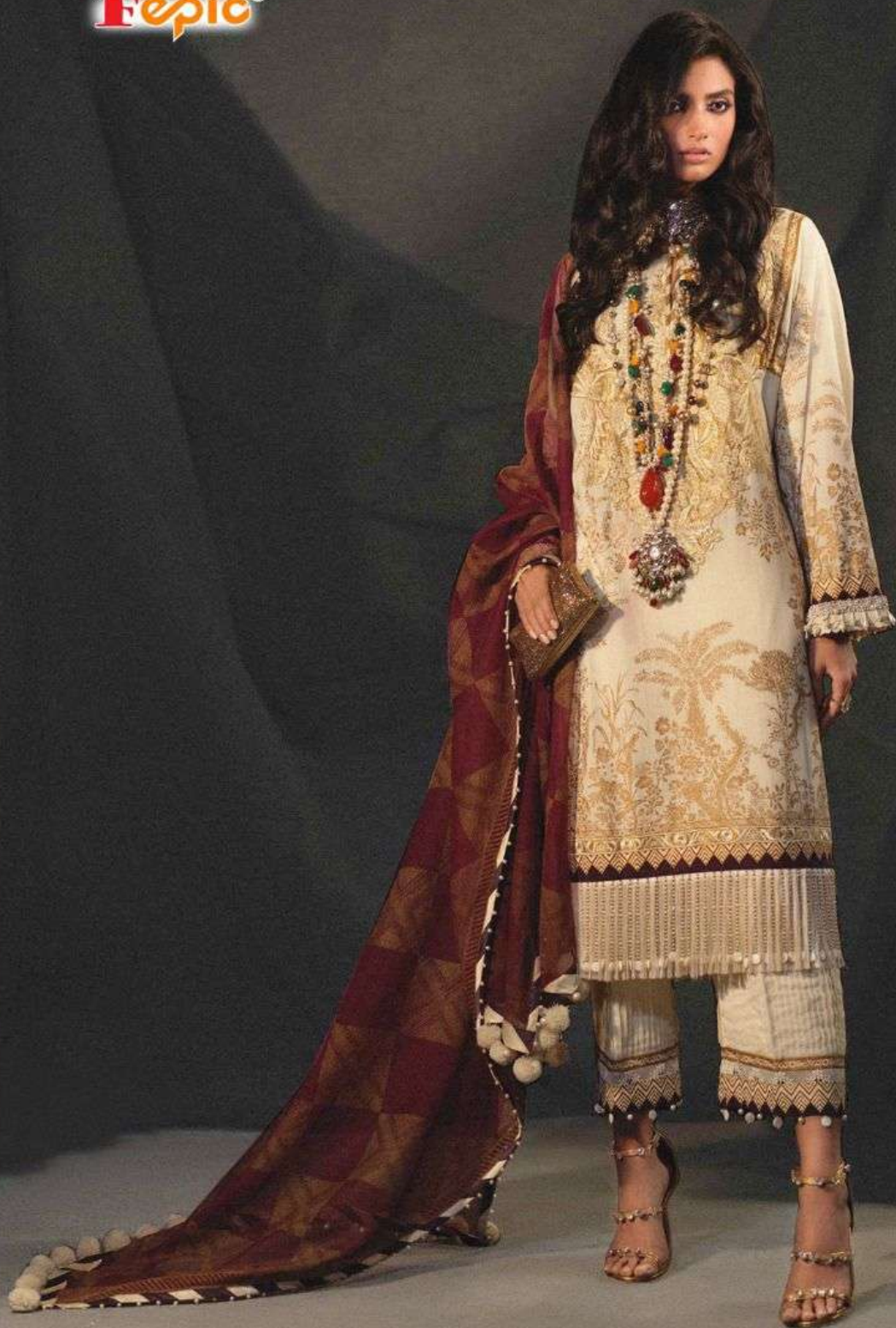


Fepic®



D.NO.43018

**Fepic®**



D.NO.43017

**Epic®**



◆ D.NO.43019 ◆

**Fepic®**



D.NO.43020

**Fepic®**



◆ D.NO.43022 ◆

Fepic®



D.NO.43021



Turn every head your way as you stroll across  
in an outfit from the new ethnic collection celebrate  
your classy side with this perfect for chic style



Fepic®



SANA SAFINAZ  
*LUXURY LIGHT*



*Seize all attention with this sparkling vibrant color  
attractive dress with natural flower*



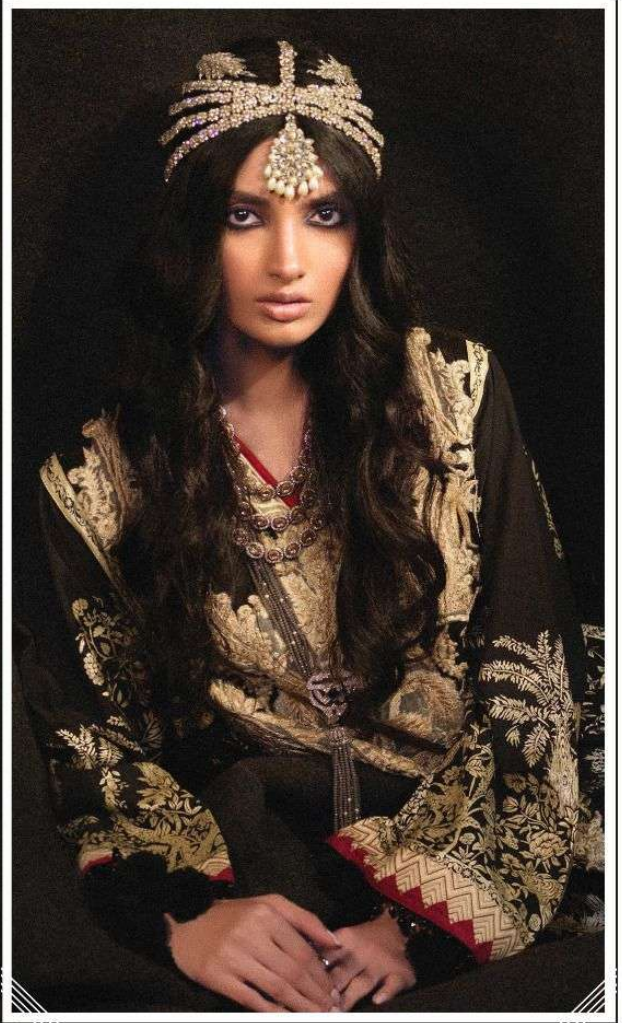


**Fepic®**  
**SANA SAFINAZ**  
*LUXURY LIGHT*  
Instagram: @Fepic Facebook: Fb.com/Fepic11  
D.NO.43020



**Fepic®**  
**SANA SAFINAZ**  
*LUXURY LIGHT*  
Instagram: Fepic Facebook: Fb.com/Fepic11  
D.NO.43015

**Epic®**



**WASHING INTRUCTIONS**

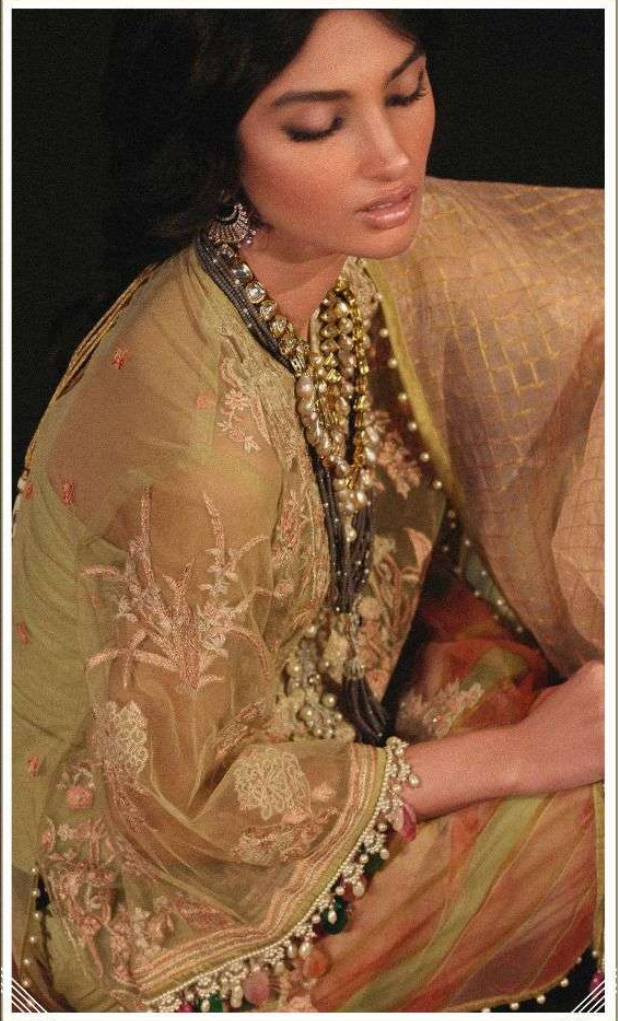
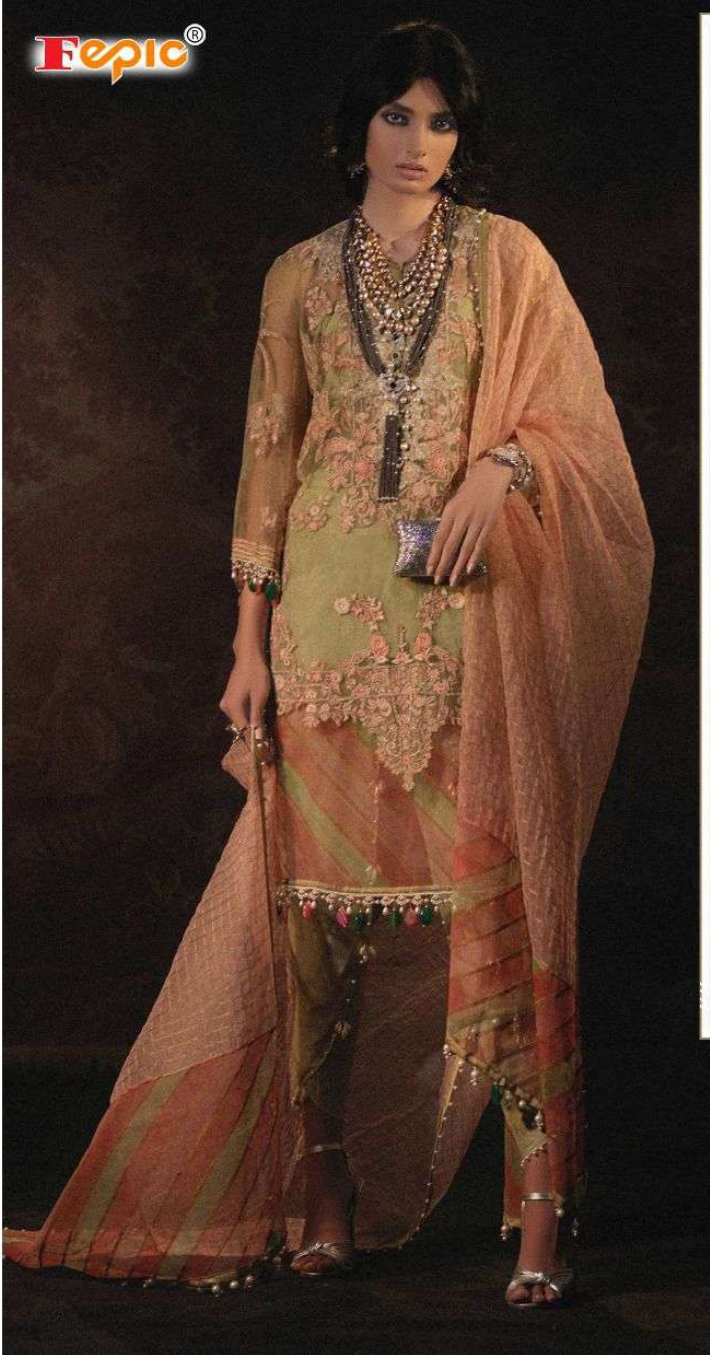
DO NOT USE ANY TYPE OF BLEACH OR STAIN REMOVING CHEMICALS  
BEFORE CUTTING / STITCHING, FABRIC SHOULD BE SOAKED BE SOAKED IN WATER  
( ALL COMPONENTS SEPARATELY ) FOR 15 MINUTES  
DO NOT KEEP WET FABRIC IN TWISTED FROM IN ORDER TO AVOID COPY MARKS |  
WASH COLOURED AND WHITE FABRICS SEPARATELY  
IRON CLOTHES AT MODERATE TEMPERATURE | DO NOT DRY FABRIC IN DIRECT SUNLIGHT  
( EXTRA LACES, HANGINGS AND ACCESSORIES ARE NOT INDUDED )

**D.NO.43018**

**SANA SAFINAZ**  
*LUXURY LIGHT*



**Fepic®**



**WASHING INTRUCTIONS**

DO NOT USE ANY TYPE OF BLEACH OR STAIN REMOVING CHEMICALS  
BEFORE CUTTING / STITCHING, FABRIC SHOULD BE SOAKED BE SOAKED IN WATER  
( ALL COMPONENTS SEPARATELY ) FOR 15 MINUTES  
DO NOT KEEP WET FABRIC IN TWISTED FROM IN ORDER TO AVOID COPY MARKS |  
WASH COLOURED AND WHITE FABRICS SEPARATELY  
IRON CLOTHES AT MODERATE TEMPERATURE | DO NOT DRY FABRIC IN DIRECT SUNLIGHT  
( EXTRA LACES, HANGINGS AND ACCESSORIES ARE NOT INDUDED )

**D.NO.43019**

**SANA SAFINAZ**  
*LUXURY LIGHT*



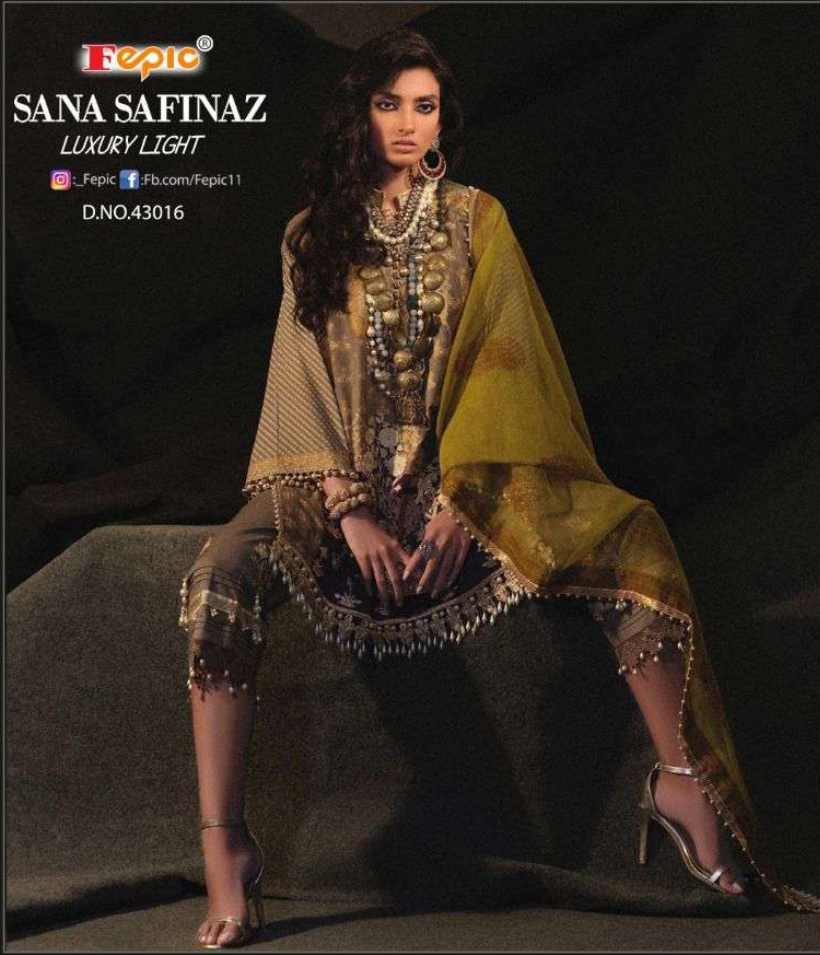
**Fepic®**

**SANA SAFINAZ**

*LUXURY LIGHT*

 \_Fepic  :Fb.com/Fepic11

D.NO.43016



**Fepic®**

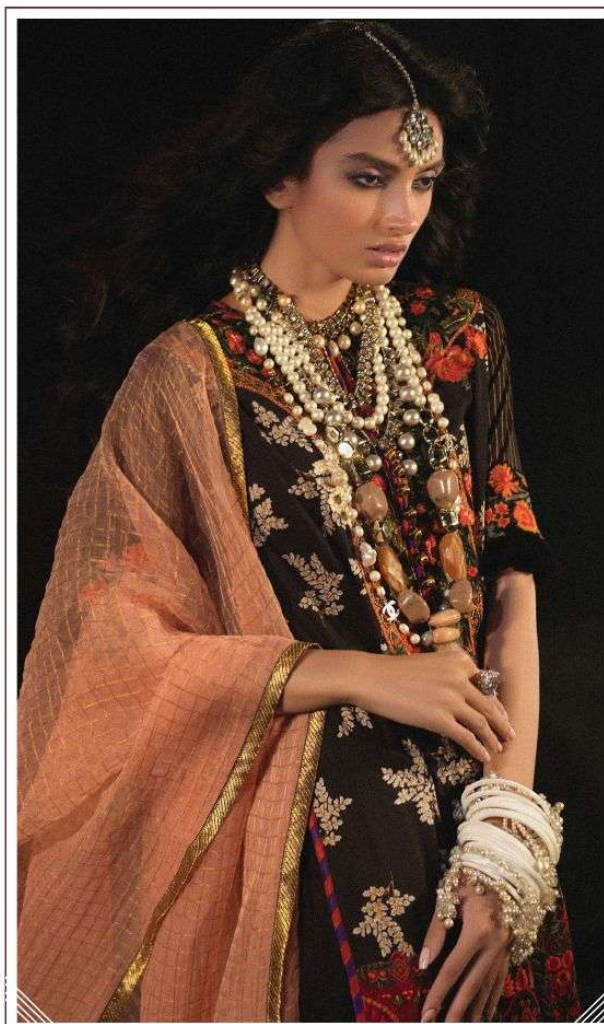
**SANA SAFINAZ**

*LUXURY LIGHT*

: \_Fepic : Fb.com/Fepic11

D.NO.43017





#### WASHING INTRUCTIONS

DO NOT USE ANY TYPE OF BLEACH OR STAIN REMOVING CHEMICALS  
BEFORE CUTTING / STITCHING, FABRIC SHOULD BE SOAKED BE SOAKED IN WATER  
( ALL COMPONENTS SEPARATELY ) FOR 15 MINUTES  
DO NOT KEEP WET FABRIC IN TWISTED FROM IN ORDER TO AVOID COPY MARKS |  
WASH COLOURED AND WHITE FABRICS SEPARATELY  
IRON CLOTHES AT MODERATE TEMPERATURE | DO NOT DRY FABRIC IN DIRECT SUNLIGHT  
( EXTRA LACES, HANGINGS AND ACCESSORIES ARE NOT INDUDED )

D.NO.43020

**SANA SAFINAZ**  
*LUXURY LIGHT*





#### WASHING INTRUCTIONS

DO NOT USE ANY TYPE OF BLEACH OR STAIN REMOVING CHEMICALS  
 BEFORE CUTTING / STITCHING, FABRIC SHOULD BE SOAKED BE SOAKED IN WATER  
 ( ALL COMPONENTS SEPARATELY ) FOR 15 MINUTES  
 DO NOT KEEP WET FABRIC IN TWISTED FROM IN ORDER TO AVOID COPY MARKS |  
 WASH COLOURED AND WHITE FABRICS SEPARATELY  
 IRON CLOTHES AT MODERATE TEMPERATURE | DO NOT DRY FABRIC IN DIRECT SUNLIGHT  
 ( EXTRA LACES, HANGINGS AND ACCESSORIES ARE NOT INDUDED )

D.NO.43021

**SANA SAFINAZ**  
*LUXURY LIGHT*

