

**Fepic®**



**Rosemeen®**  
*trends*



**Fepic®**

**Rosemeen®**

*trends*

D.NO.91018





**Fepic®**



**WASHING INSTRUCTIONS**

DO NOT USE ANY TYPE OF BLEACH OR STAIN REMOVING CHEMICALS  
BEFORE CUTTING / STITCHING, FABRIC SHOULD BE SOAKED IN WATER  
( ALL COMPONENTS SEPARATELY ) FOR 15 MINUTES  
DO NOT KEEP WET FABRIC IN TWISTED FORM IN ORDER TO AVOID COPY MARKS |  
WASH COLOURED AND WHITE FABRICS SEPARATELY  
IRON CLOTHES AT MODERATE TEMPERATURE | DO NOT DRY FABRIC IN DIRECT SUNLIGHT  
( EXTRA LACES, HANGINGS AND ACCESSORIES ARE NOT INCLUDED )

**Rosemeen®**  
*trends*  
D.NO.91018



**Fepic®**  
**Rosemeen®**  
*trends*



our elegant collection and fashion  
define true quintessence in women

D.NO.91019



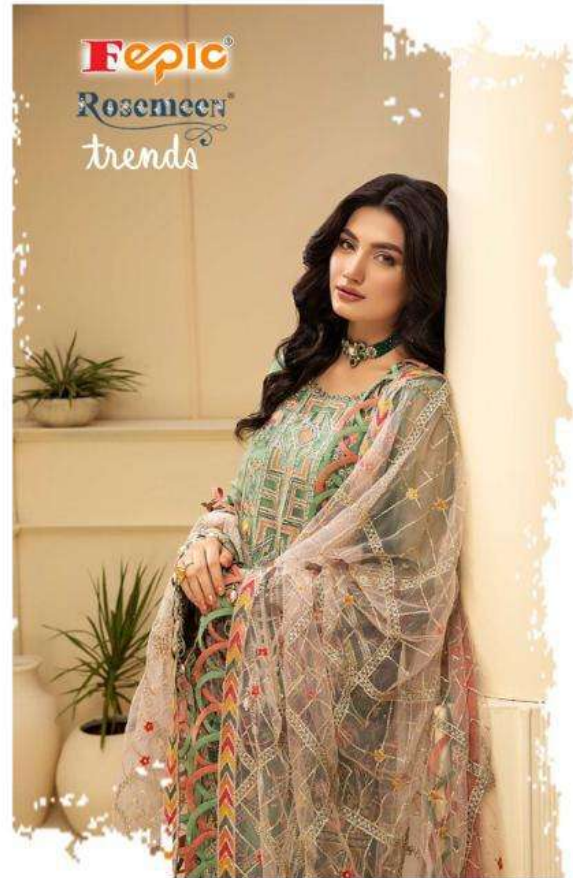


**Fepic®**



**Rosemeen®**  
*trends*





D.NO.91016

**Fepic®**  
**Rosemeen®**  
*trends*







D.NO.91017







D.NO.91016



D.NO.91017



D.NO.91018



D.NO.91019

**Fepic**

**Rosemeen**  
trends

Instagram: Fepic

Facebook: Fb.com/Fepic11





**Fepic®**



**WASHING INSTRUCTIONS**

DO NOT USE ANY TYPE OF BLEACH OR STAIN REMOVING CHEMICALS  
BEFORE CUTTING / STITCHING, FABRIC SHOULD BE SOAKED IN WATER  
( ALL COMPONENTS SEPARATELY ) FOR 15 MINUTES  
DO NOT KEEP WET FABRIC IN TWISTED FORM IN ORDER TO AVOID COPY MARKS |  
WASH COLOURED AND WHITE FABRICS SEPARATELY  
IRON CLOTHES AT MODERATE TEMPERATURE | DO NOT DRY FABRIC IN DIRECT SUNLIGHT  
( EXTRA LACES, HANGINGS AND ACCESSORIES ARE NOT INCLUDED )

**Rosemeen®**  
*trends*  
D.NO.91016





D.NO	TOP	DUPATTA	BOTTOM	CP
91016	BUTTER FLY NET EMBROIDERED WITH HAND WORK	BUTTER FLY NET EMBROIDERED	DULL SANTOON	1220
91017	BUTTER FLY NET EMBROIDERED WITH HAND WORK	BUTTER FLY NET EMBROIDERED	DULL SANTOON	1220
91018	FAUX GEORGETTE EMBROIDERED WITH HAND WORK	BUTTER FLY NET EMBROIDERED	DULL SANTOON	1299
91019	FAUX GEORGETTE EMBROIDERED WITH HAND WORK	NAZMEEN EMBROIDERED	DULL SANTOON	1299
				AVARAGE - 1259

**Fepic**<sup>®</sup>

**Rosemeen**<sup>®</sup>  
trends

 :\_Fepic

 :Fb.com/Fepic11



**Fepic®**



**WASHING INSTRUCTIONS**

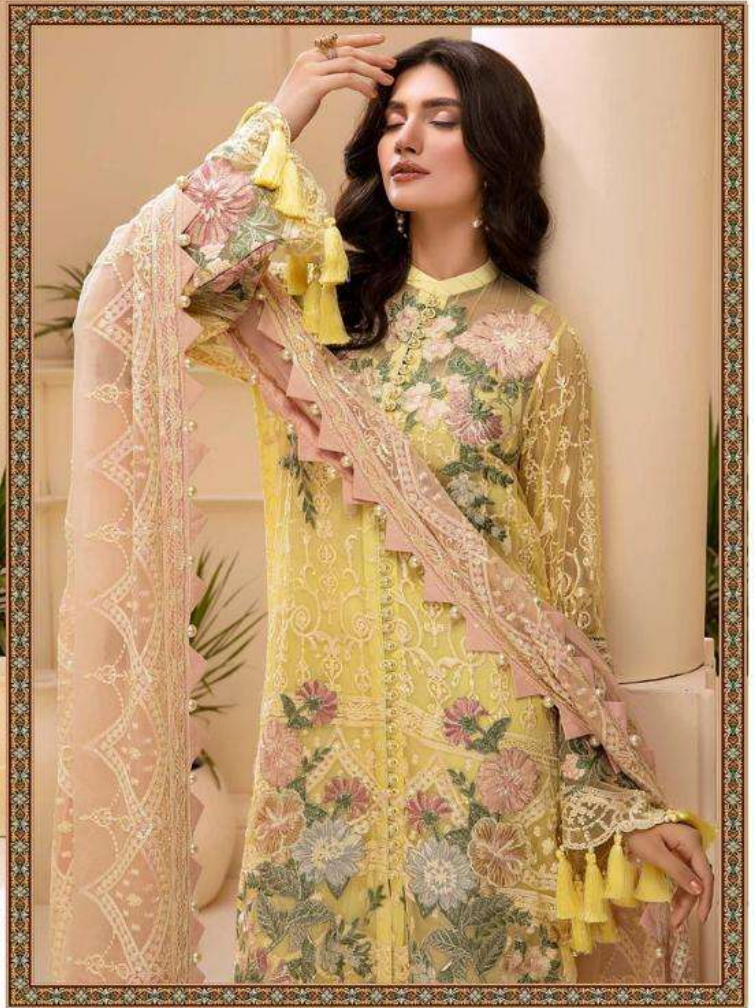
DO NOT USE ANY TYPE OF BLEACH OR STAIN REMOVING CHEMICALS  
BEFORE CUTTING / STITCHING, FABRIC SHOULD BE SOAKED IN WATER  
( ALL COMPONENTS SEPARATELY ) FOR 15 MINUTES  
DO NOT KEEP WET FABRIC IN TWISTED FORM IN ORDER TO AVOID COPY MARKS |  
WASH COLOURED AND WHITE FABRICS SEPARATELY  
IRON CLOTHES AT MODERATE TEMPERATURE | DO NOT DRY FABRIC IN DIRECT SUNLIGHT  
( EXTRA LACES, HANGINGS AND ACCESSORIES ARE NOT INCLUDED )

**Rosemeen®**  
*trends*  
D.NO.91019





**Fepic®**



**WASHING INSTRUCTIONS**

DO NOT USE ANY TYPE OF BLEACH OR STAIN REMOVING CHEMICALS  
BEFORE CUTTING / STITCHING, FABRIC SHOULD BE SOAKED IN WATER  
( ALL COMPONENTS SEPARATELY ) FOR 15 MINUTES  
DO NOT KEEP WET FABRIC IN TWISTED FORM IN ORDER TO AVOID COPY MARKS |  
WASH COLOURED AND WHITE FABRICS SEPARATELY  
IRON CLOTHES AT MODERATE TEMPERATURE | DO NOT DRY FABRIC IN DIRECT SUNLIGHT  
( EXTRA LACES, HANGINGS AND ACCESSORIES ARE NOT INCLUDED )

**Rosemeen®**  
*trends*  
D.NO.91017

