



AL<sup>®</sup>K

AL KHUSHBU<sup>®</sup>

AADILA

VOL-2



**ALK**<sup>®</sup>

**AL KHUSHBU**<sup>®</sup>

# AADILA

VOL-2



**ALK D.No.5056-G**

**TOP**

FOX GEORGETTE  
WITH EMBROIDERY

**BOTTOM-INNER**

DULL SANTOON

**DUPATTA**

NAZMIN  
WITH EMBROIDERY



**ALK**<sup>®</sup>

**AL KHUSHBU**<sup>®</sup>

# AADILA

VOL-2



**ALK D.No.5056-E**

**TOP**

FOX GEORGETTE  
WITH EMBROIDERY

**BOTTOM-INNER**

DULL SANTOON

**DUPATTA**

NAZMIN  
WITH EMBROIDERY



**ALK**<sup>®</sup>

**AL KHUSHBU**<sup>®</sup>

# AADILA

VOL-2



**ALK D.No.5056-F**

**TOP**

FOX GEORGETTE  
WITH EMBROIDERY

**BOTTOM-INNER**

DULL SANTOON

**DUPATTA**

NAZMIN  
WITH EMBROIDERY

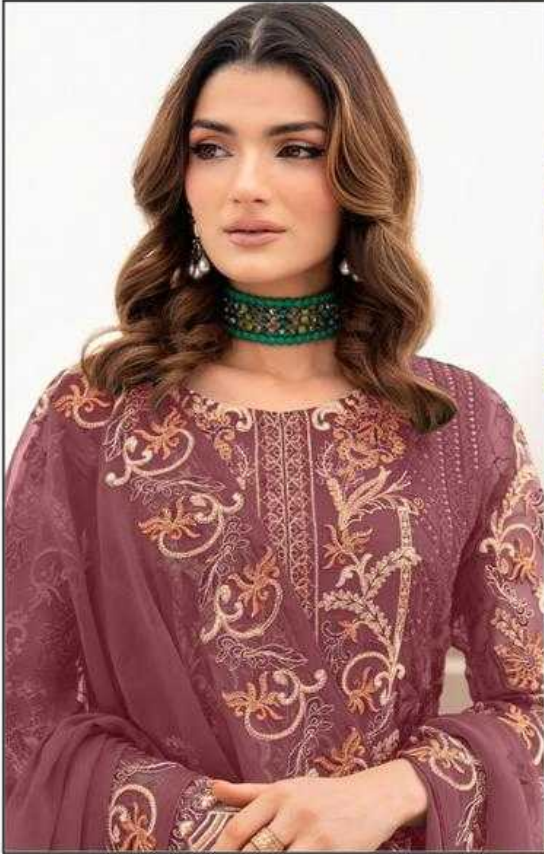


**ALK**<sup>®</sup>

**AL KHUSHBU**<sup>®</sup>

# AADILA

VOL-2



**ALK D.No.5056-H**

**TOP**

FOX GEORGETTE  
WITH EMBROIDERY

**BOTTOM-INNER**

DULL SANTOON

**DUPATTA**

NAZMIN  
WITH EMBROIDERY



A woman with long, wavy brown hair is wearing a teal-colored dress with intricate gold and brown floral embroidery. She is also wearing a green choker necklace and a matching teal shawl. Her hands are clasped in front of her, holding a small teal bag. The background is a soft-focus indoor setting with a wooden table and a vase.

ALK<sup>®</sup>

AL KHUSHBU<sup>®</sup>

AADILA

VOL-2

**ALK**  
AL KHUSHBU

# AADILA VOL-2

TOP FOX GEORGETTE  
WITH EMBROIDERY  
BOTTOM-INNER DULL SANTOON  
NAZMIN  
DUPATTA WITH EMBROIDERY



ALK-5056-E



ALK-5056-F



ALK-5056-G



ALK-5056-H