

*Style  
Eternal*

*A breath-taking array of fine detailing & intricate design inspired by Indian culture.....*

  
**SAYURI®**  
Designer



**Adah**  
REFINING THE FUTURE OF FASHION







*Style  
Eternal*

*A breath-taking array of fine detailing & intricate design inspired by Indian culture.....*

  
**SAYURI**<sup>®</sup>  
Designer



**Adah**  
REFINING THE FUTURE OF FASHION





She wears a crown built from her  
spine of inner strength and  
modesty with sparkling jewels to  
represent her each and every quality.

**D No - 5629**















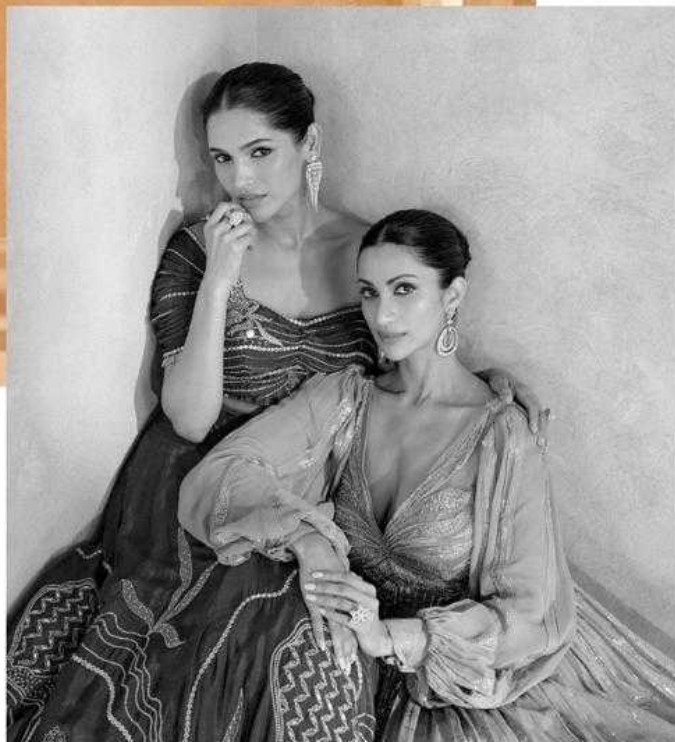
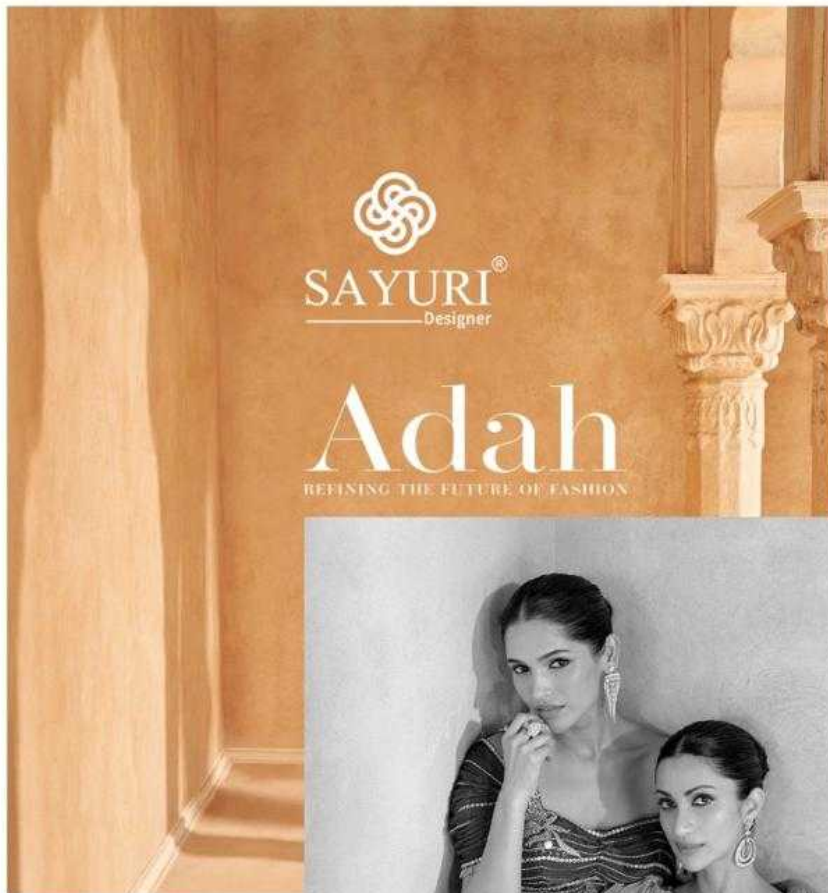
**SAYURI<sup>®</sup>**  
Designer



**D No - 5630**











## THE MOST POWERFUL ART



SAYURI®  
Designer



Embrace your love for prints.

Whether you mix & match or go head-to-toe.

Just remember there are no rules.

**D No - 5631**



Look Gorgeous  
**EVERYDAY**



*Every creation was classic yet versatile with a modern touch given even the most traditional garment while retaining its richness of embroidery, detailing & textures*





**D NO-5629**



**D NO-5630**



**D NO-5631**

  
**SAYURI<sup>®</sup>**  
 Designer

**Adah**  
 REFINING THE FUTURE OF FASHION



SAYURI<sup>®</sup>  
— Designer —



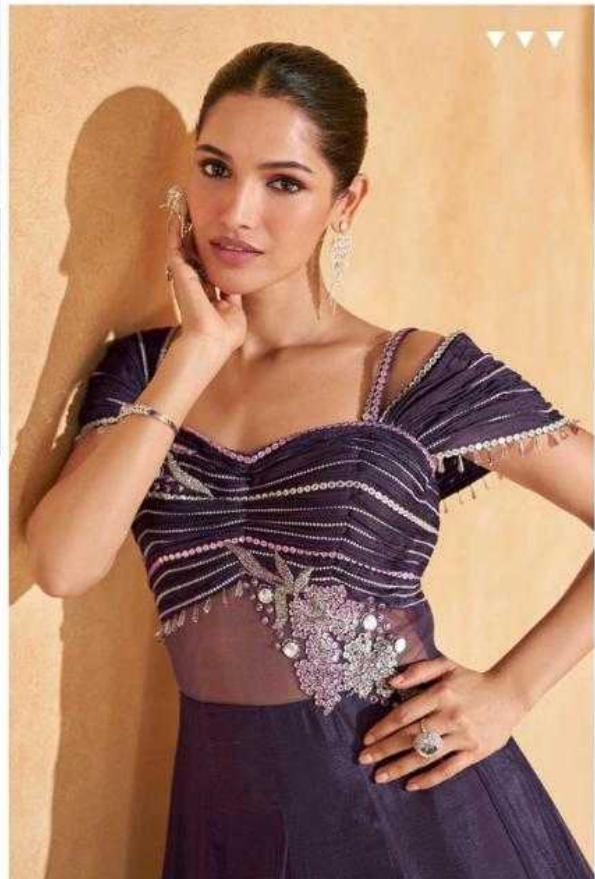




## THE MOST POWERFUL ART



**SAYURI<sup>®</sup>**  
Designer



Fashion is the most powerful art.

It's movement, design and architecture all in one.

It shows the world who we are and who we'd like to be.

**D No - 5629**



**SAYURI<sup>®</sup>**  
Designer

Celebrate This Season with Color Contrasts that Promise to Shock the Sun &  
Revel in the Surprise of this Hot New Trend.